

PERIMETER SURVEYING & MAPPING

Prepared by: Jeff S. Hodapp, P.S.M.
Certificate of Authorization No. LB7264
949A Clint Moore Road
Boca Raton, Florida 33487
Tel: (561) 241-9988
Fax: (561) 241-5182

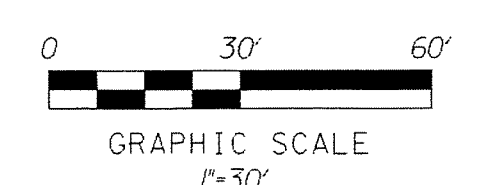
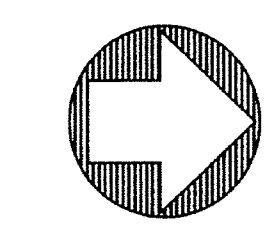
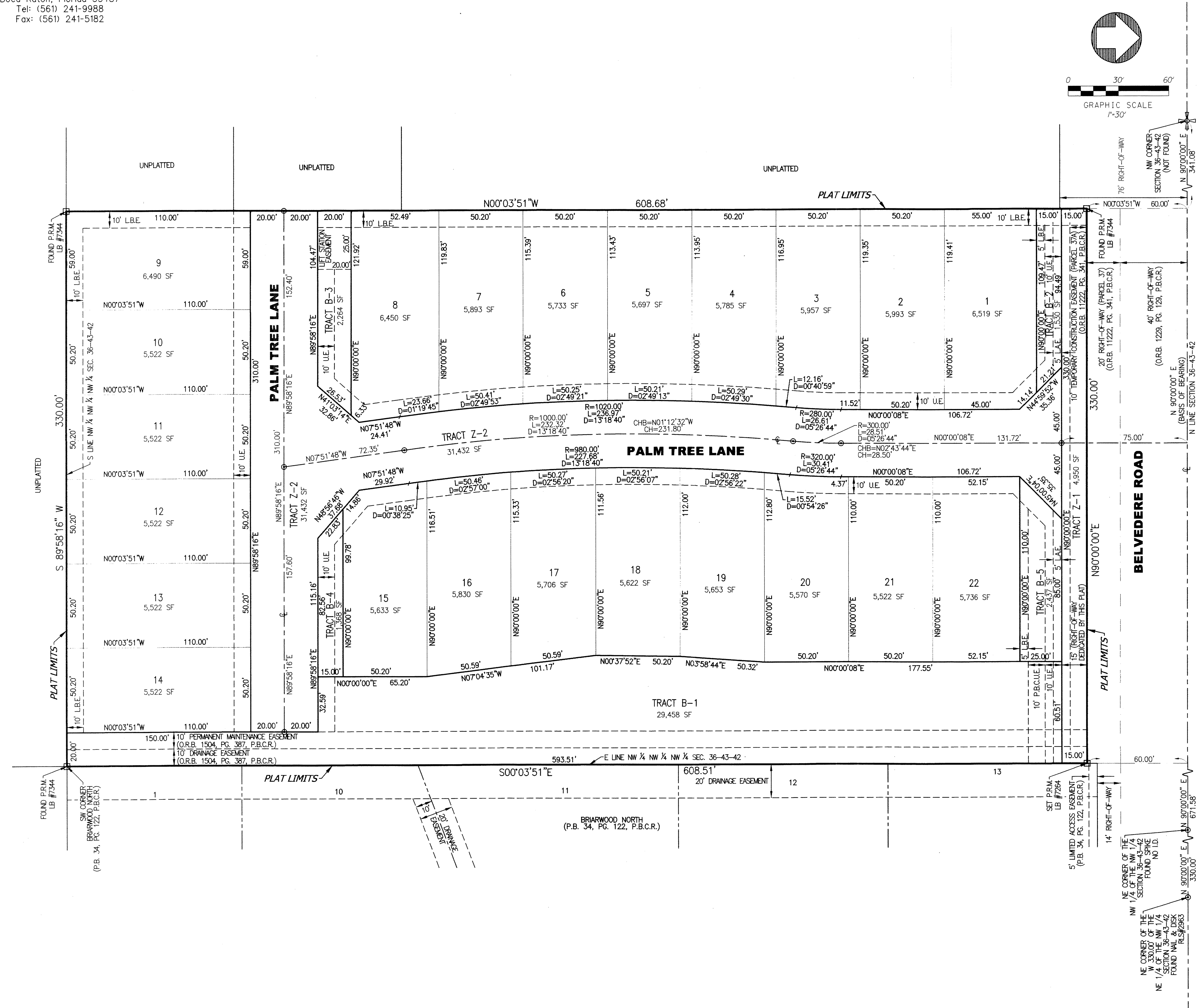
EMERALD COVE

A PORTION OF THE NW 1/4 OF SECTION 36, TOWNSHIP 43 SOUTH, RANGE 42 EAST, TOWN OF HAVERHILL, PALM BEACH COUNTY, FLORIDA

AUGUST, 2014

142

SHEET 2 OF 2



- ABBREVIATIONS**
- CH CHORD LENGTH
 - CHB CHORD BEARING
 - C CENTERLINE
 - D DELTA (CENTRAL ANGLE)
 - D.E. DRAINAGE EASEMENT
 - I.R. IRON ROD
 - I.R.C. IRON ROD AND CAP
 - L ARC LENGTH
 - L.A.E. LIMITED ACCESS EASEMENT
 - L.B. LICENSED BUSINESS
 - L.B.E. LANDSCAPE BUFFER EASEMENT
 - L.S. LICENSED SURVEYOR
 - O.P.B. OFFICIAL RECORDS BOOK
 - P.B. PLAT BOOK
 - P.B.C.R. PALM BEACH COUNTY RECORDS
 - P.B.C.U.E. PALM BEACH COUNTY UTILITY EASEMENT
 - P.C.P. PERMANENT CONTROL POINT
 - P. PERMANENT REFERENCE MONUMENT
 - P.S.M. PROFESSIONAL SURVEYOR & MAPPER
 - R RADIUS
 - SEC. SECTION
 - SF SQUARE FEET
 - U.E. UTILITY EASEMENT

- LEGEND**
- ⊙ = P.C.P. (PERMANENT CONTROL POINT)
 - ⊠ = P.R.M. - PERMANENT REFERENCE MONUMENT